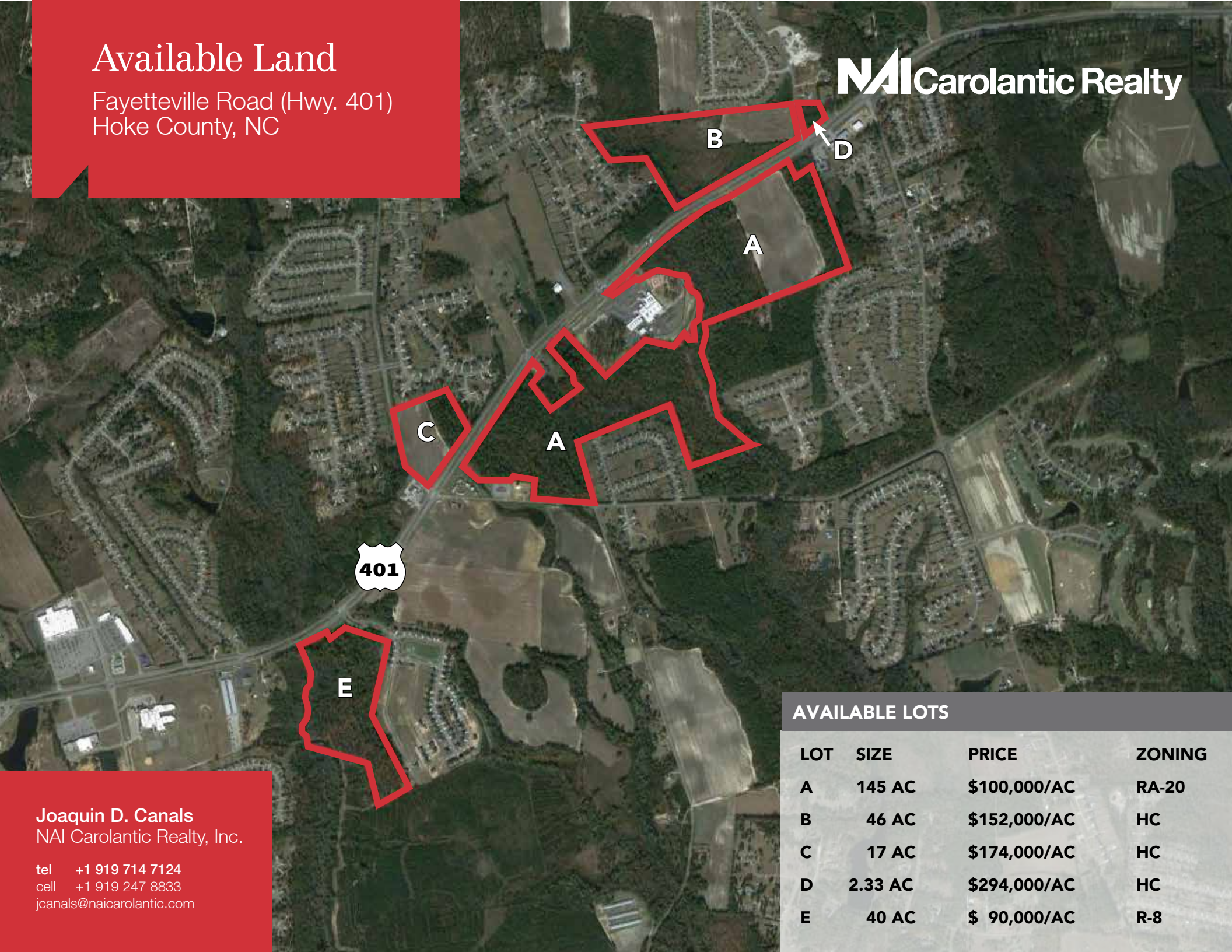


Available Land

Fayetteville Road (Hwy. 401)
Hoke County, NC

NAI Carolantic Realty



401

AVAILABLE LOTS

LOT	SIZE	PRICE	ZONING
A	145 AC	\$100,000/AC	RA-20
B	46 AC	\$152,000/AC	HC
C	17 AC	\$174,000/AC	HC
D	2.33 AC	\$294,000/AC	HC
E	40 AC	\$ 90,000/AC	R-8

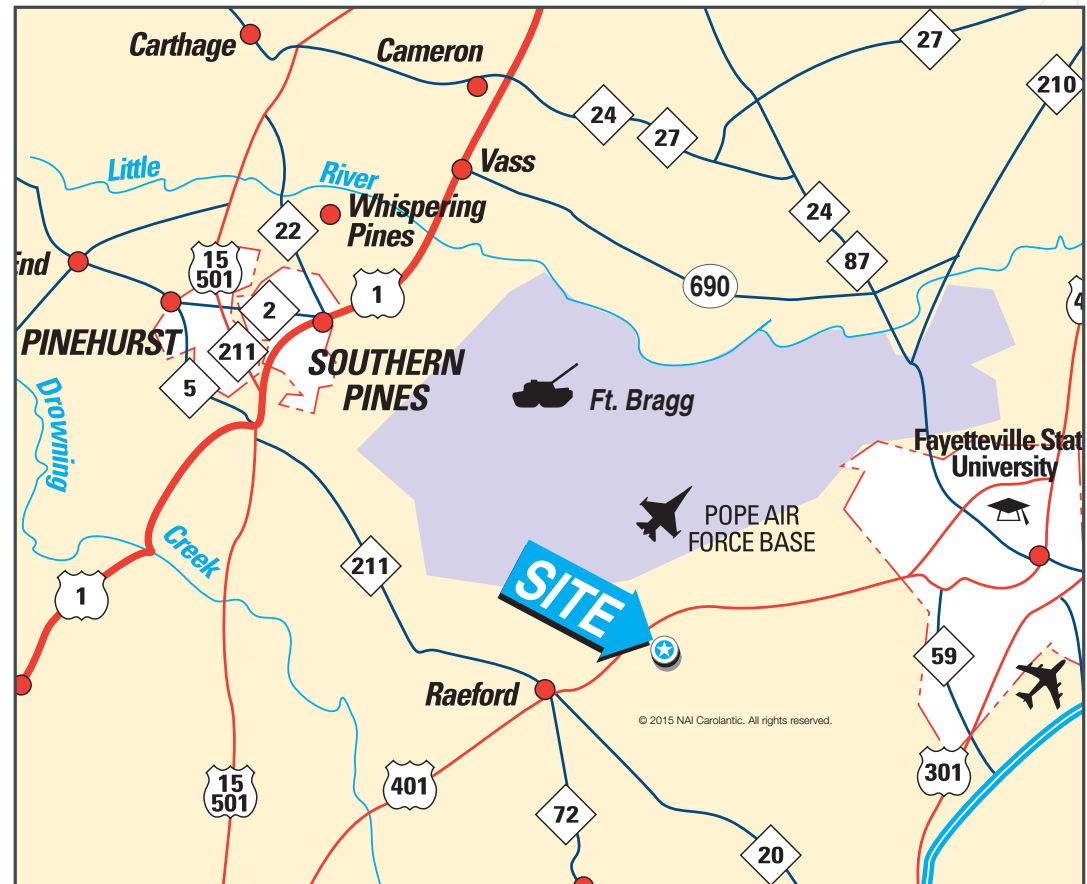
Joaquin D. Canals
NAI Carolantic Realty, Inc.

tel +1 919 714 7124
cell +1 919 247 8833
jcanals@naicarolantic.com

Overview

Highlights:

- 250.33 acres total
- Hoke County PIN#: 494560301008
- Traffic count: 23,500 vehicles/day on Hwy. 401



Lot Details

Highlights:

- 145 acres
- Surrounds First Health Moore Regional Hospital
- Zoning: RA-20
- Water on both sides of Hwy. 401
- Sewer on site
- Sales price: \$100,000/acre



Lot Details

Highlights:

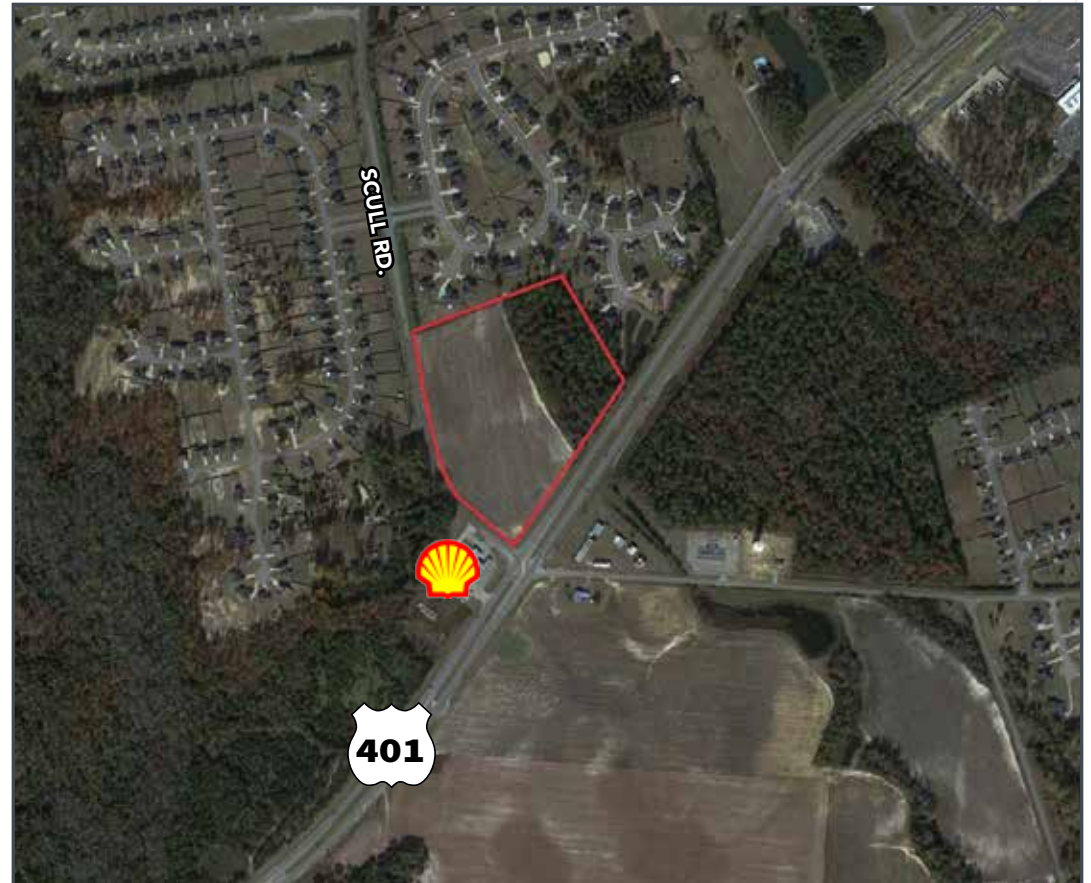
- 46 acres
- Zoning: HC
- Located at the intersection of Hwy. 401 & Hobson Rd.
- Water on both sides of Hwy. 401
- Sewer along the west side of the parcel
- Sales price: \$152,000/acre



Lot Details

Highlights:

- 17 acres
- Zoning: HC
- Located at the intersection of Hwy. 401 & Scull Rd.
- Water along Hwy. 401
- Sales price: \$174,000/acre



Lot D
2.33 Acres

Lot Details

Highlights:

- 2.33 acres
- Zoning: HC
- Located at the intersection of Hwy. 401 & Hobson Rd.
- Water along Hwy. 401
- Sales price: \$294,000/acre



Lot Details

Highlights:

- 40 acres
- Zoning: R-8
- Located at the intersection of Hwy. 401 & Royal Birkdale Drive (Turnberry Subdivision)
- Located near East Hoke Middle School, Food Lion and Walmart Supercenter
- Water along Hwy. 401
- Sewer at the rear of the property
- Sales price: \$90,000/acre



NO WARRANTY OR REPRESENTATION, EXPRESS OR IMPLIED, IS MADE AS TO THE ACCURACY OF THE INFORMATION CONTAINED HEREIN, AND THE SAME IS SUBMITTED SUBJECT TO ERRORS, OMISSIONS, CHANGE OF PRICE, RENTAL OR OTHER CONDITIONS, PRIOR SALE, LEASE OR FINANCING, OR WITHDRAWAL WITHOUT NOTICE, AND OF ANY SPECIAL LISTING CONDITIONS IMPOSED BY OUR PRINCIPALS. NO WARRANTIES OR REPRESENTATIONS ARE MADE AS TO THE CONDITION OF THE PROPERTY OR ANY HAZARDS CONTAINED THEREIN ARE ANY TO BE IMPLIED.

NAI Carolantic Realty

5121 Kingdom Way, Suite 200
Raleigh, NC 27607
+1 919 832 0594
naicarolantic.com