

For Lease

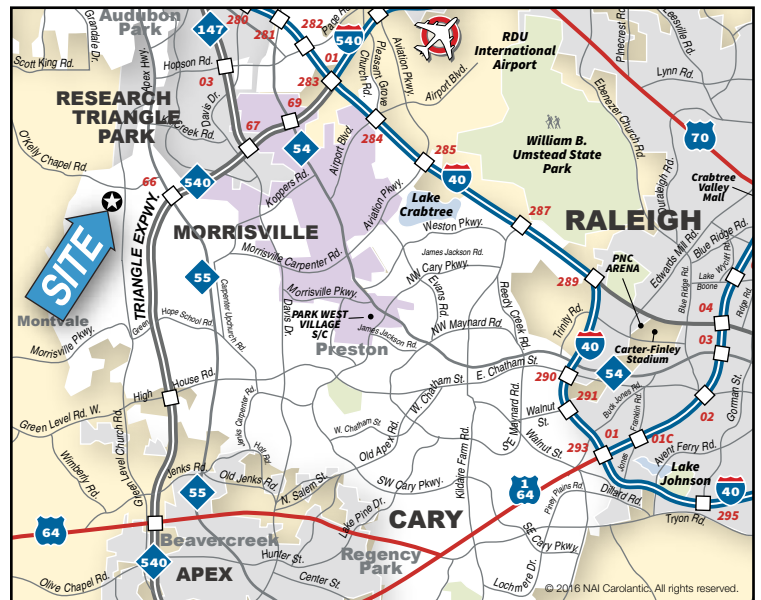
Class A Office



O'Kelly Chapel Rd. & Green Level Church Rd. Cary, NC

Property Features

- 9,200 SF Class A medical and office space available
- Two-story 13,700 SF medical and office building
- 12.4% Core factor
- Parking 5:1000
- Projected shell delivery Q3 2017
- Adjacent to UNC Wellness Center at Northwest Cary
- Easy access to I-540 and Hwy 55
- Lease rate: \$25/SF, NNN



Moss Withers, MBA

+1 919 810 2492 mobile
mwithers@naicarolantic.com

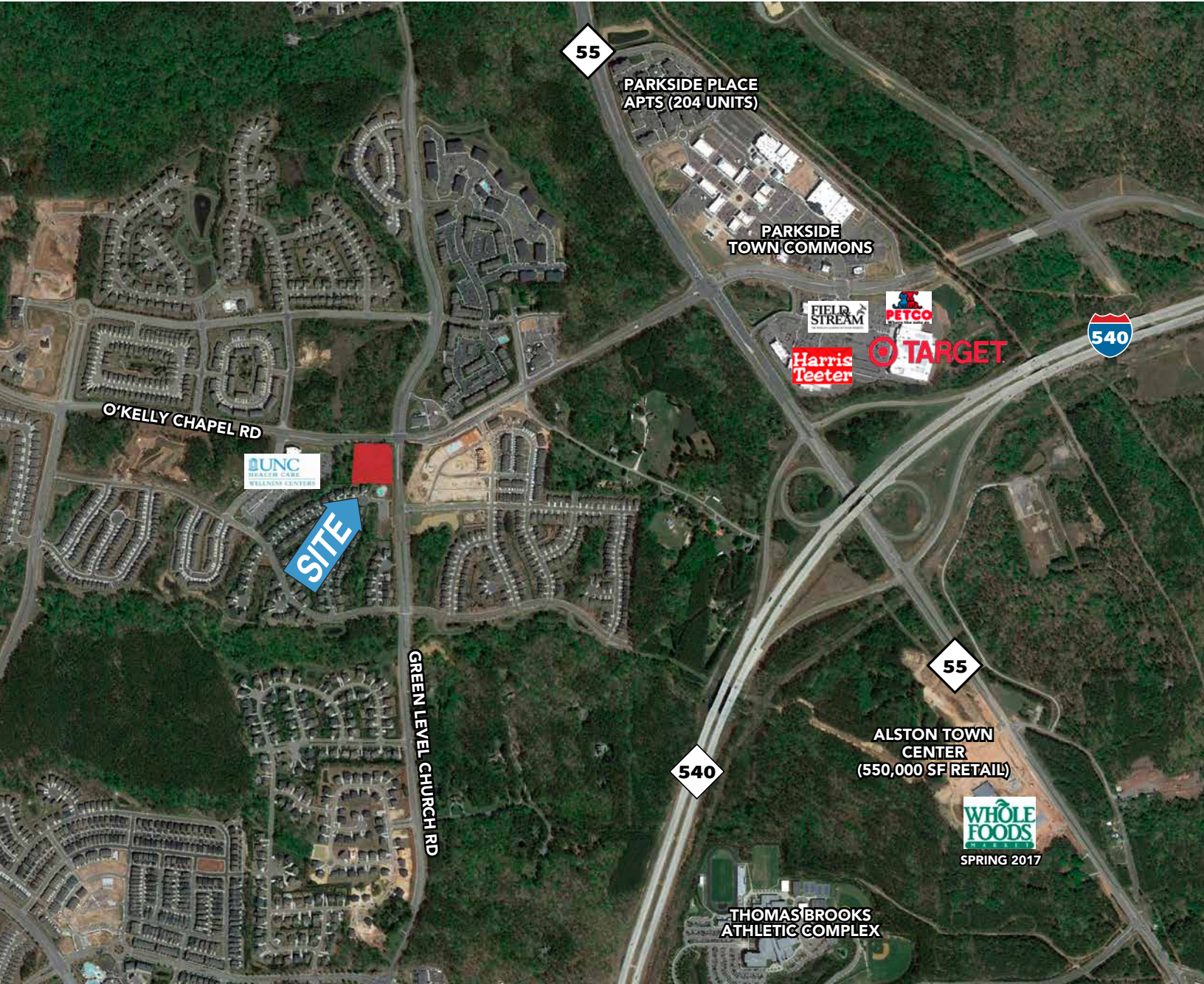
Karah Jennings

+1 919 817 0705 mobile
kjennings@naicarolantic.com

NO WARRANTY OR REPRESENTATION, EXPRESS OR IMPLIED, IS MADE AS TO THE ACCURACY OF THE INFORMATION CONTAINED HEREIN, AND THE SAME IS SUBMITTED SUBJECT TO ERRORS, OMISSIONS, CHANGE OF PRICE, RENTAL OR OTHER CONDITIONS, PRIOR SALE, LEASE OR FINANCING, OR WITHDRAWAL WITHOUT NOTICE, AND OF ANY SPECIAL LISTING CONDITIONS IMPOSED BY OUR PRINCIPALS NO WARRANTIES OR REPRESENTATIONS ARE MADE AS TO THE CONDITION OF THE PROPERTY OR ANY HAZARDS CONTAINED THEREIN ARE ANY TO BE IMPLIED.

5121 Kingdom Way, Suite 200
Raleigh NC 27607
+1 919 832 0594 office
naicarolantic.com

For Lease
Class A Office



O'Kelly Chapel Rd. & Green Level Church Rd. Cary, NC

NAI Carolantic Realty
Commercial Real Estate Services, Worldwide.

5121 Kingdom Way, Suite 200
Raleigh NC 27607
+1 919 832 0594 office
naicarolantic.com